

0639-001

101

# REGENCY LAKE ESTATES

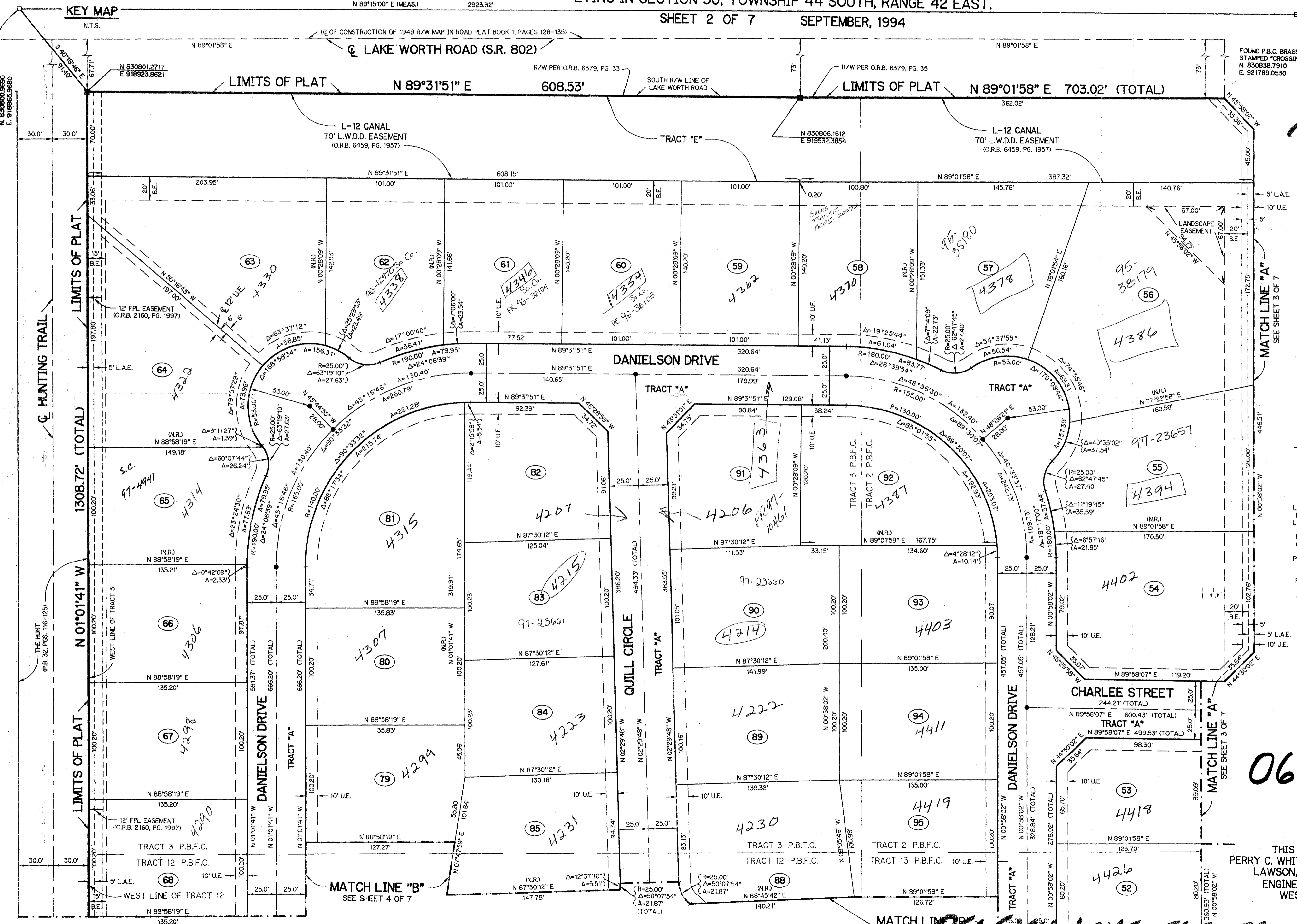
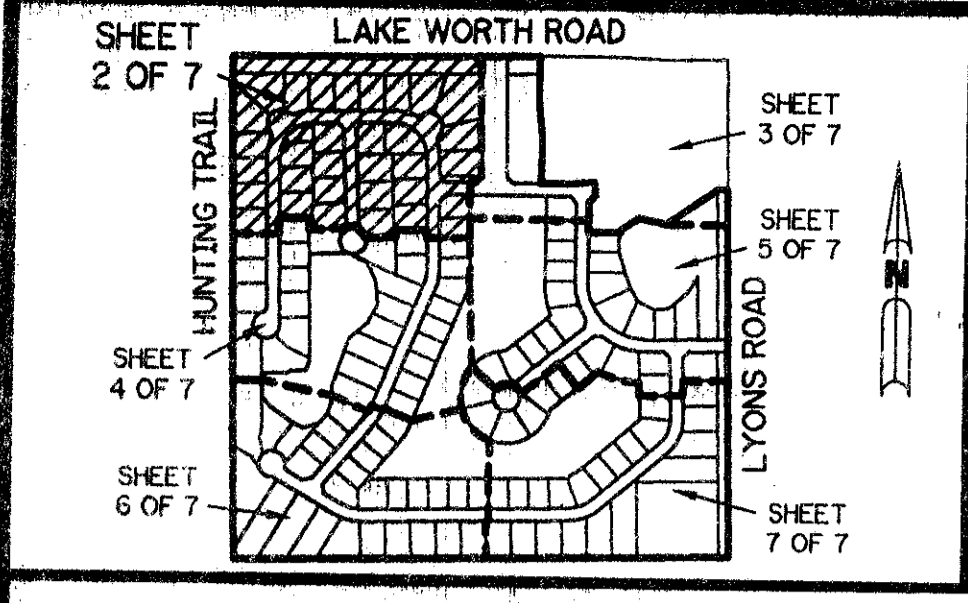
BEING A REPLAT OF A PORTION OF TRACTS 1, 2, 3, 12, 13, 14, 15, 16, AND 17 AND ASSOCIATED ABANDONED RIGHT-OF-WAY ALL IN BLOCK 27 ACCORDING TO THE PLAT OF PALM BEACH FARMS CO. PLAT NO. 3, AS RECORDED IN PLAT BOOK 2, PAGE 45, PUBLIC RECORDS OF PALM BEACH COUNTY, FLORIDA, LYING IN SECTION 30, TOWNSHIP 44 SOUTH, RANGE 42 EAST.

A PLANNED UNIT DEVELOPMENT

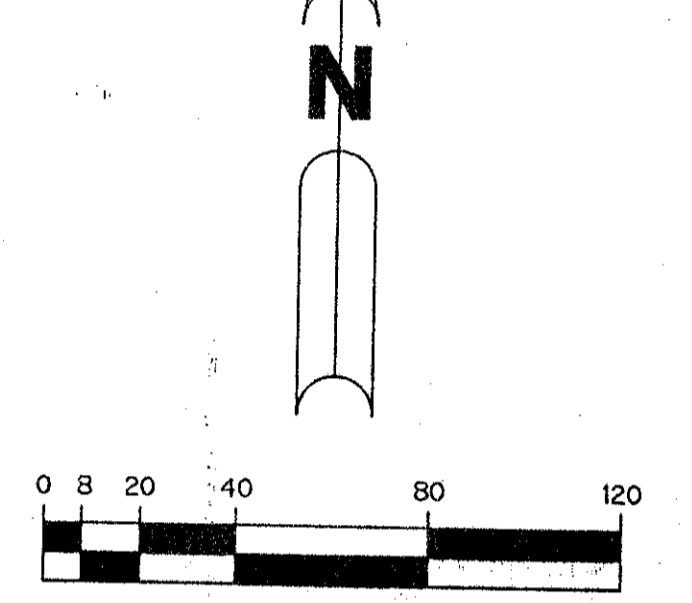
PALM BEACH FARMS CO. PLAT No. 3

CYPRESS TRAILS P.U.D. (PLAT BOOK 42, PAGE 28)

SHEET 2 OF 7 SEPTEMBER, 1994



PET. 94-4 CURRENT 5/2/21



SCALE: 1" = 40'  
OVERALL KENT PUD

- LEGEND:**
- - PERMANENT REFERENCE MONUMENT, PLS #4213
  - ▲ - PERMANENT CONTROL POINT, PLS #4213
  - Δ - DELTA ANGLE
  - A - ARC LENGTH
  - B.E. - BUFFER EASEMENT
  - D.E. - DRAINAGE EASEMENT
  - FPL - FLORIDA POWER & LIGHT COMPANY
  - L.M.A.E. - LAKE MAINTENANCE ACCESS EASEMENT
  - L.M.E. - LAKE MAINTENANCE EASEMENT
  - L.W.D.D. - LAKE WORTH DRAINAGE DISTRICT
  - N.R. - NOT RADIAL
  - N.T.S. - NOT TO SCALE
  - O.R.B. - OFFICIAL RECORD BOOK
  - P.B. - PLAT BOOK
  - P.B.F.C. - BLOCK 27, PALM BEACH FARMS CO. PLAT NO. 3 (PLAT BOOK 2, PAGE 45)
  - PGS. - PAGES
  - P.L.S. - PROFESSIONAL LAND SURVEYOR
  - R - RADIUS
  - R/W - RIGHT-OF-WAY
  - U.E. - UTILITY EASEMENT
  - S.T. - SURVEY TIE LINE

0638-001

75/101

THIS INSTRUMENT PREPARED BY PERRY C. WHITE P.L.S. 4213 STATE OF FLORIDA LAWSON, NOBLE AND ASSOCIATES, INC. ENGINEERS PLANNERS SURVEYORS WEST PALM BEACH, FLORIDA

SUBDIVISION - Regency Lake Estates  
BOOK 75 PAGE 101  
FLOOD ZONE B FLOOD MAP #170A  
QUAD # 48 ZONING PUD  
SE 9th 04 ZIP CODE 33467  
PUD NAME Regent 30444/42

TAZ 738

REGENCY LAKE ESTATES